





Idem with the Cessna at Brussels (EBBR Rwy 25 R) the same day 24/10/2014 trying to get **WX lite** Message %waiting for FS+



Richard . 24/10/2014 at 07 :35 (Brussels time) . PMDG 737NGX . FSUIPC 4.929
FSrealWX Pro v2.01.221 RC2
 One time program stops FSX when downloading WX



Your complimentary use period has ended.
Thank you for using PDF Complete.

[Click Here to upgrade to Unlimited Pages and Expanded Features](#)



2nd time gives message « no metar station in the vicinity » - impossible to get metar (stays in red although weather downloaded)
All those problems never happened before

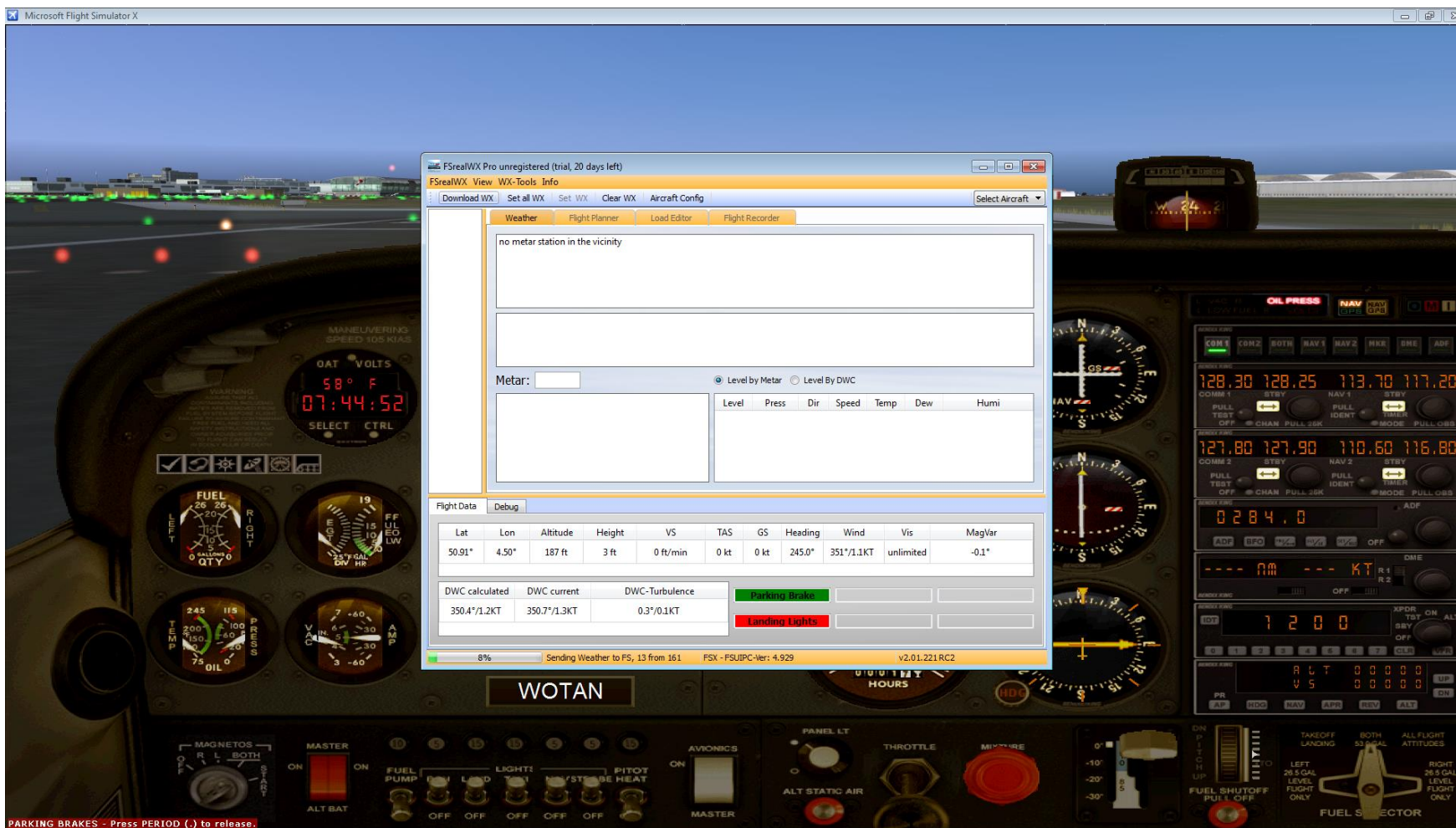


Your complimentary use period has ended.
Thank you for using PDF Complete.

[Click Here to upgrade to Unlimited Pages and Expanded Features](#)



Idem with Cessna before loading WX Pro



Idem with Cessna after loading WX . loads the weather but does not displays any information

Thanks for your help and support
Richard